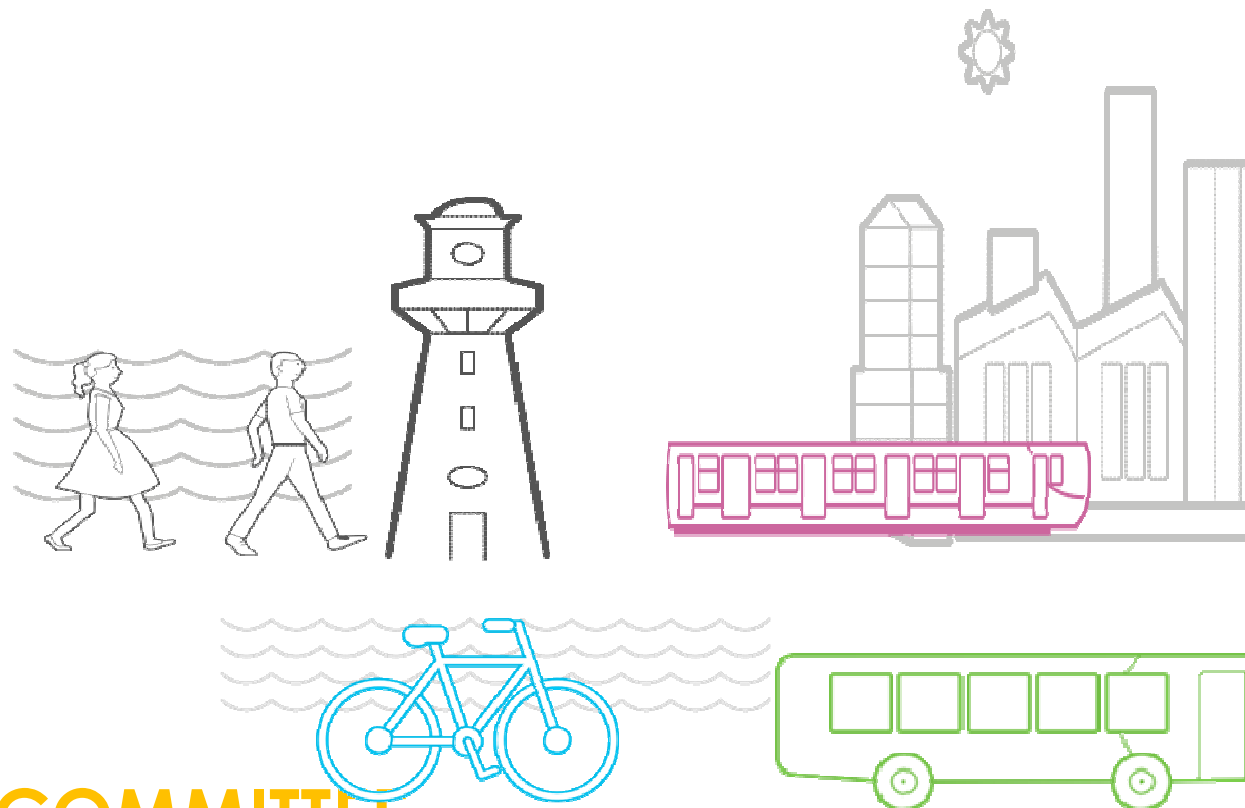


CARDIFF TRANSPORT STRATEGY

ENVIRONMENTAL SCRUTINY COMMITTEE

14th June 2016



CARDIFF TRANSPORT STRATEGY: PURPOSE

- Corporate Plan Commitment – by December 2016
- **NOT A NEW STRATEGY**
- Single document
- What we are doing on transport and why
- Links between LTP and LDP
- Main activities & priorities
- 20 year timeframe
- Visual
- Accessible to a non-technical audience
- Living document
- Basis for future communications

CARDIFF TRANSPORT STRATEGY: CONTENTS

Transport & Liveability

Vision

Progress so far

Main challenges

50:50 Modal Split by 2026

Opportunities

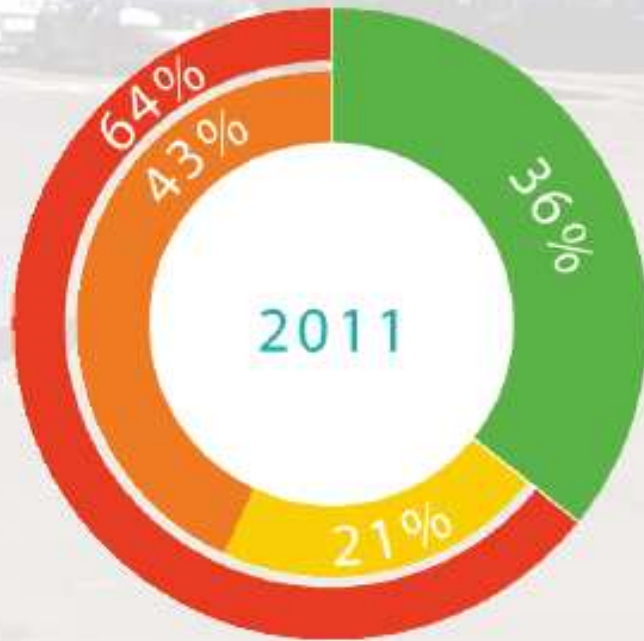
Priorities - (by mode)

How we will deliver





Targets and Monitoring

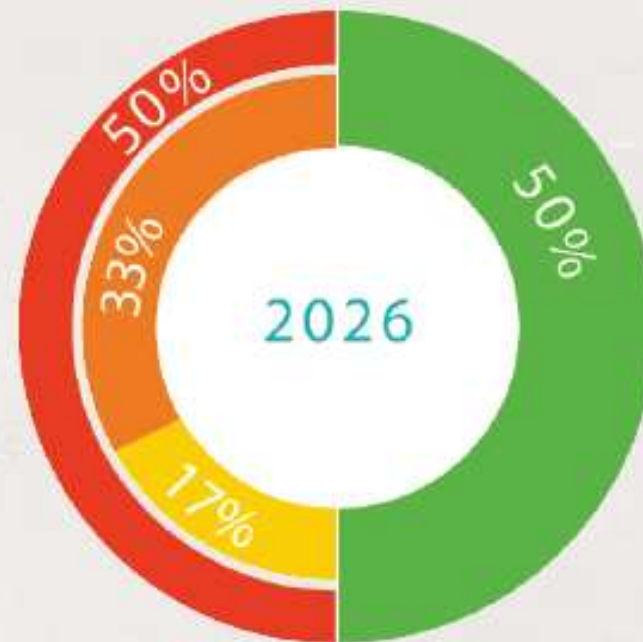
Communications & Reporting

OUR TARGET - 50:50 MODAL SPLIT



2011 MODAL SPLIT

-  SUSTAINABLE TRAVEL MODES
-  CAR BASED TRAVEL
-  CAR DRIVER
-  CAR PASSENGERS



2026 MODAL SPLIT

CARDIFF TRANSPORT STRATEGY: VISION

Vision

“an integrated transport system that offers safe, efficient and sustainable travel for all, where public transport, walking and cycling provide real and desirable alternatives to car travel, which contributes to making Cardiff Europe's most liveable capital city.”

CARDIFF TRANSPORT STRATEGY: CORE PRIORITIES

Widening Travel Choices: providing non-car alternatives

Demand Management: reducing demand

Network Management: make best use of network

CARDIFF TRANSPORT STRATEGY: PRIORITIES

WALKING Walkable Streets/Neighbourhoods/City Centre/20mph Areas

CYCLING New Network Plan/Step Change in Investment/Excellent Infrastructure/New Communities/Existing Streets/On-street cycle hire

RAIL TRANSPORT Support electrification programme; access to stations, new stations where there is a business case

BUS TRANSPORT Central Hub/Expand Network/Serve New Communities/Bus Corridors/More Services/Quicker Journeys/Easier Interchange/Ticketing/Green Fleet

HIGHWAY NETWORK Safety/Sustainable Travel/Bus Corridors/Smart Management/Enforcement Powers/Asset Management

CITY REGION LINKS Tram System/Metro/North West Corridor/Strategic Bus Corridors

CARDIFF TRANSPORT STRATEGY: DELIVERY MECHANISMS

Land Use Planning: LDP strategic sites

Transport Infrastructure Investment Programme: with annual grants

Partnership Working: Welsh Government, Neighbouring LA's
Transport Operators etc

CARDIFF TRANSPORT STRATEGY: TARGETS & MONITORING

To Increase the sustainable travel proportion of the modal split by 1% per annum for each journey purpose from October 2015

To achieve an annual percentage improvement in journey time for key transport corridors from October 2015

Monitored through LDP monitoring framework

CARDIFF TRANSPORT STRATEGY: COMMUNICATIONS PLAN

Pro-active communication

Bulletins

Progress Updates

Information to explain reasons for projects and benefits etc.

CARDIFF TRANSPORT STRATEGY: TIMETABLE

Report to Cabinet – July 2016

July - October 2016 – Public Consultation

Review Document/Develop Action Plan – October/November 2016

Cabinet Approval of Final Strategy Document – December 2016

CARDIFF TRANSPORT STRATEGY: FEEDBACK.....

1. Does the draft document achieve its purpose?
2. Does it reflect/fit with the Council's wider strategic priorities?
3. Are the narrative and key messages clear and coherent?
4. Does its design and content make it accessible to a wide audience?
5. Are there any gaps?
7. Any other comments?